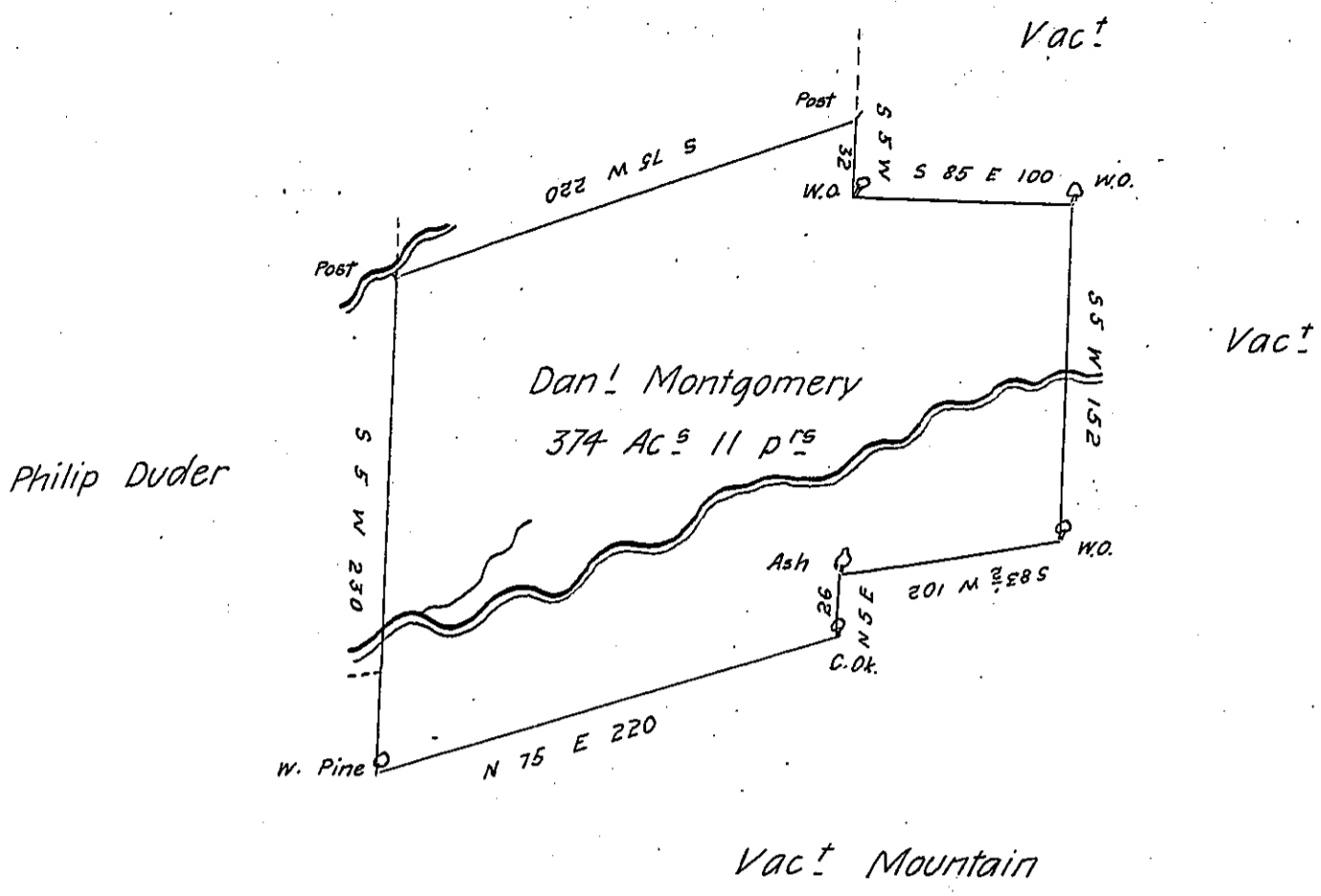


Tho<sup>s</sup> Strawbridge



By Virtue of a Warrant dated 15<sup>th</sup> June 1792 Surveyed  
 the 10<sup>th</sup> of August 1792 Unto Daniel Montgomery the above described Tract  
 of Three hundred and seventy four acres & 11 perches of Land & Allow-  
 ance Situated on the East Branch of Fishing Creek adjoining Philip  
 Duder in North<sup>td</sup> County

By

W<sup>m</sup> Montgomery D. S<sup>r</sup>

To Daniel Brodhead Esq<sup>r</sup>

Surv<sup>r</sup> Gen<sup>l</sup> of Pensylv<sup>a</sup>

IN TESTIMONY that the above is a copy of the original remaining on file in  
 the Department of Internal Affairs of Pennsylvania, made  
 conformably to an Act of Assembly approved the 16th day of  
 February, 1833, I have hereunto set my Hand and caused  
 the Seal of said Department to be affixed at Harrisburg,  
 this.....fifteenth.....day of.....February.....1906

*Loac R. Brown*  
 Secretary of Internal Affairs.